

# INSTALLING THE GXP (Guardian XP) INTO AN EXISTING ACW CABINET SHELL



## TOOLS REQUIRED

The 4K00901-FI retrofit kit is required for this installation.

The amount of security required for the machine must be identified by the installer and machine owner and appropriate measures taken. The mounting holes that connect the GXP to the ACW Shell can be as few as 4 or as many as 12.

**Time Required: approximately 4-6 hours**

### Recommended Tools:

- Riv Nut Insertion Tool and Riv Nuts – used to secure the GXP cabinet to the existing ACW shell. Visit this web site (or equivalent) for more information... [http://www.prospick.com/threaded\\_inserts.html](http://www.prospick.com/threaded_inserts.html)
- Sawzall with metal cutting blades.
- 6" – 14T Sawzall bi-metal blade (3 Required)
- 9" – 14T Sawzall bi-metal blade (1 Required)
- Rotozip type cutter with metal cutting blades (Grinder can be substituted)
- 3-1/2" Metal cutting disc (4 Required)
- Dremel type cutter
- Cut-off wheel No. 407 (10 Required)
- Reinforced cut-off wheel (5 Required)
- Allen wrench set
- Drill and/or Hammer drill – If Required
- Nut Driver Set
- Regular and Phillips Screw Drivers



## SUMMARY OF STEPS FOR THIS CONVERSION

Remove all ACW components and cables from cabinet.

Remove the door and all associated components.

Remove (grind off) any items (brackets, studs...) that protrude into the cabinet shell.

Insert the bottom cabinet spacers (minimum of two) used to center the Guardian XP in the ACW shell. Align the GXP so it is centered in the ACW shell.

Transfer (center punch) the selected four "A" hole locations through the knock-outs in GXP (See photo to the right). Note: Use holes "B" through additional knock-outs for added security.

Remove the Guardian XP from the ACW shell and then drill four 5/16" dia. holes through the ACW shell where center punched.

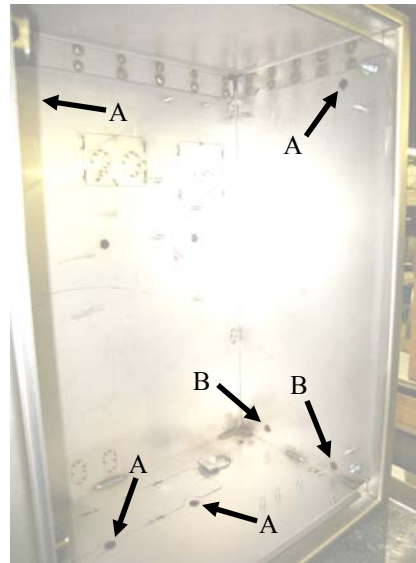
Install retrofit bezel frame onto the GXP, but do not tighten nuts inside GXP. This will allow frame to be adjusted in and out as required for proper fit.

Re-install the GXP with retrofit bezel frame into the ACW shell.

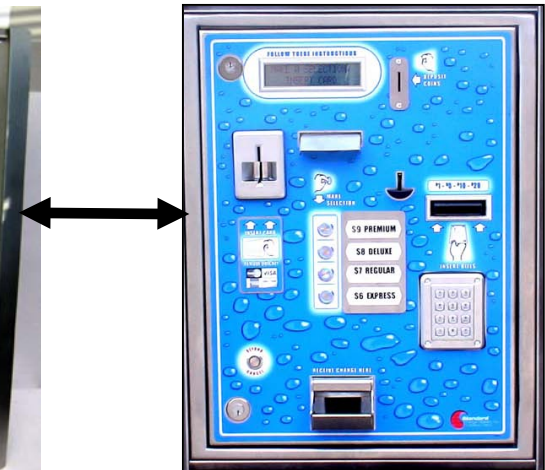
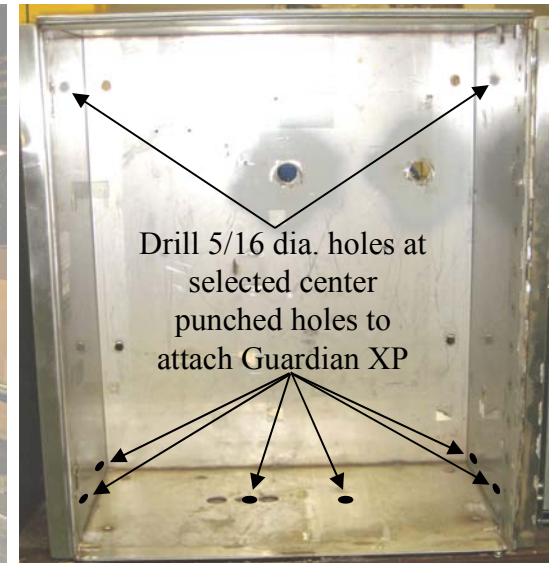
Insert mounting bolts (See Fig. 3 & 4) into or through ACW shell to fasten GXP to ACW shell or support structure.

Adjust retrofit bezel frame for best visual effect and tighten nuts (See Fig. 1 & 2) to secure in place.

### GXP (Guardian)

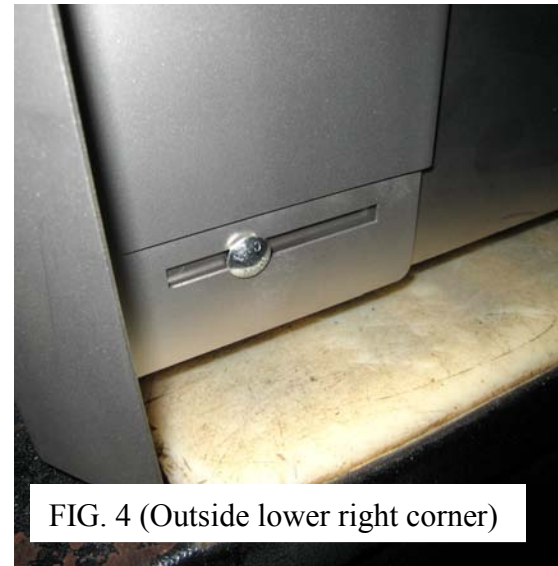
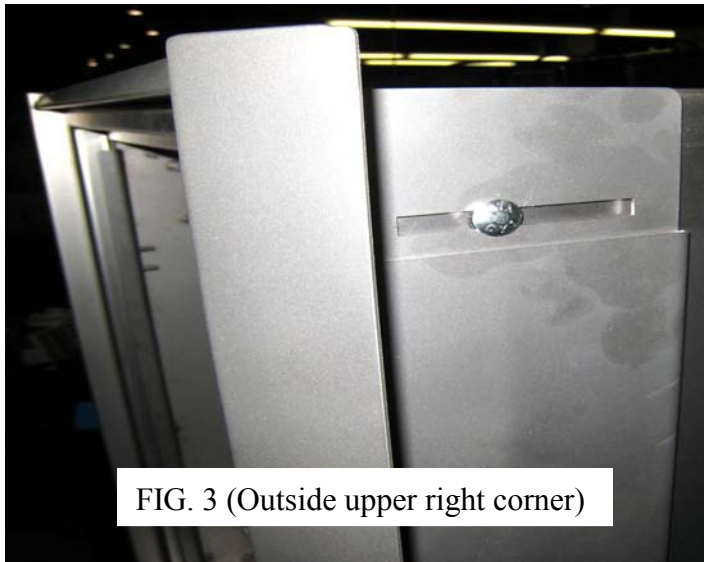
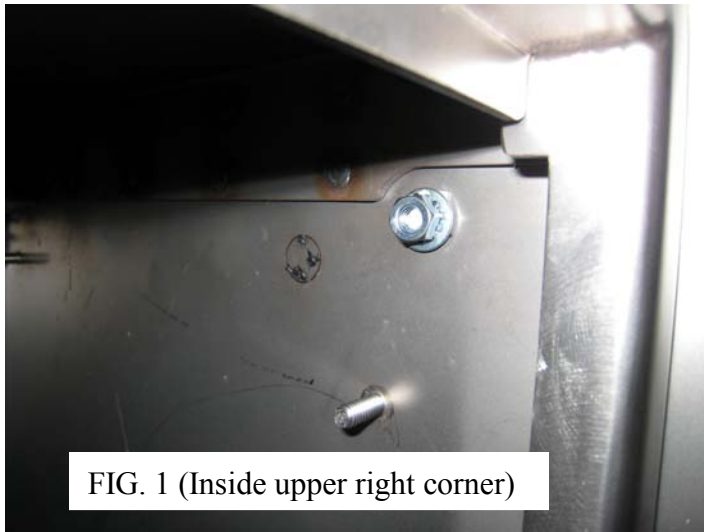


### HAMILTON ACW SHELL



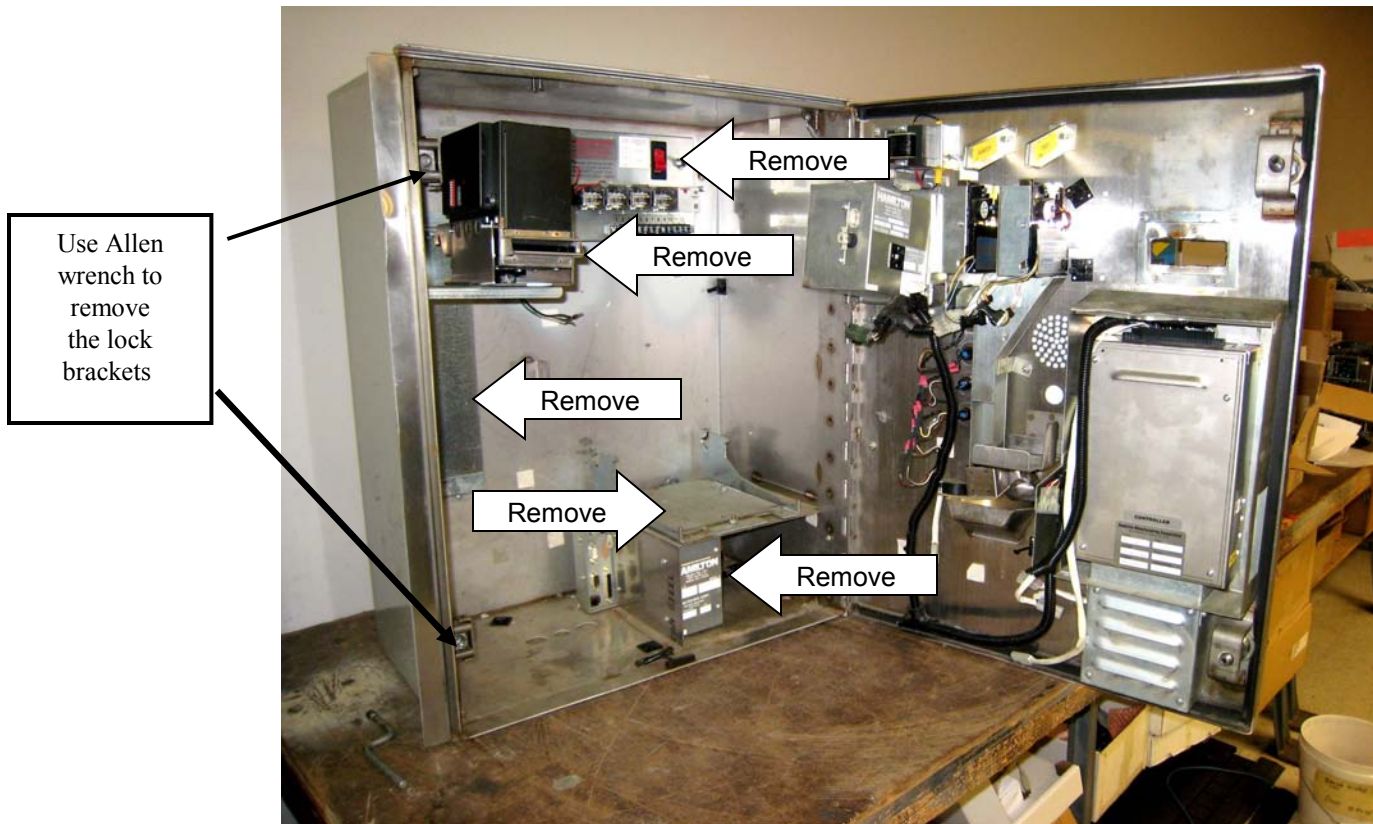
## INTAKE AND EXHAUST FOR CABINET COOLING





## COMPONENTS TO REMOVE FROM THE ACW SHELL

Remove only the items in the cabinet shell. The entire door will be removed along with all components attached to it.



**ACW SHELL WITH ALL CABINET & WELDED COMPONENTS REMOVED.**

